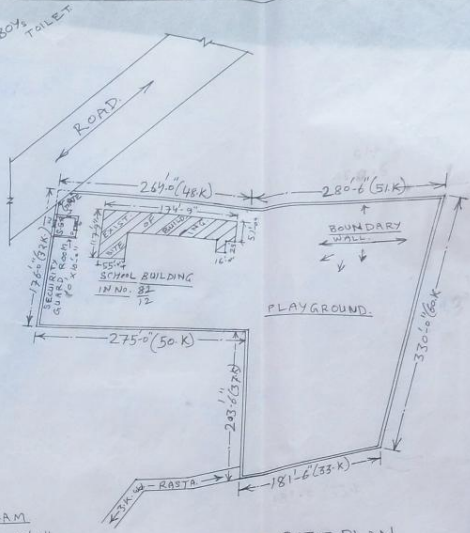
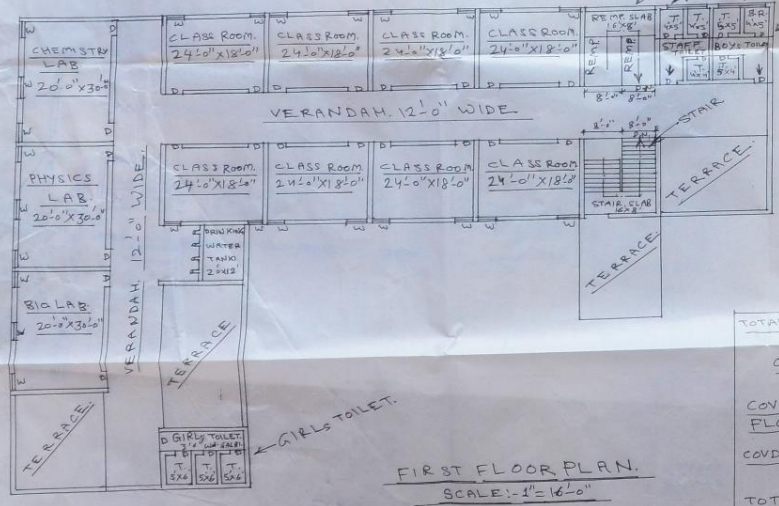


GROUND FLOOR PLAN.  
SCALE: 1" = 16' 0"

NOTE: - K = KARAM  
1 KARAM = 5' 6"



SITE PLAN.  
SCALE: 1" = 56' 0"



FIRST FLOOR PLAN.  
SCALE: 1" = 16' 0"

PROP. & EXISTING BUILDING PLAN OF 'ALAH - E. INSANIYAT PUBLIC SCHOOL UMRA, SITUATED AT KHEWAT/KHATA NO. 2/2, MUSTKIL NO/KILA NO. 82/12 (8-18) KA 1/2 BHAG BAKDAR RAKBA 4 KANAL 9 MARLA OR KHEWAT/KHATA 116/19, MUSTKIL NO. 101, 13/2 (2-7), 18 (3-5), 19 (7-18), KUL TADADI RAKBA 17 KANAL - 19 MARLA AT VILLAGE UMRA, TEH. NAGINA, DISTT. NUH. (H.R.)  
KUL RAKBA = 17 KANAL 19 MARLA

RUN BY: - ZAMIYA RAWAZATUL ULOOM SOCIETY VILL. UMRA, TEH. NAGINA, DISTT. NUH. (HR)

TOTAL AREA (RAKBA) OF SCHOOL = 97,737.75 SFT OR = 10,859.75 SQ. YARD. OR = 17 KANAL - 19 MARLA	TOTAL FAR = $\frac{23796.625}{97,737.75} \times 100 = 24.34\%$
COVERED AREA AT GROUND FLOOR = 12,983.5 SFT.	
COVERED AREA AT FIRST FLOOR = 10,813.125 SFT.	
TOTAL COVERED AREA (G.F. + F.F.) = 23,796.625 SFT. OR = 2644.06 SQ. YARD OR = 2210.70 SQ. MEN	

DRAWN BY  
*Pamul*  
BANKSHYAM DA ORU  
REG. NO. 1000 M. E. CIVIL  
EST. ASSOCIATES  
ARCHITECTS & VALUERS  
HYDRAABAD (INDIA)

SIG. OF APP. CHAIRMAN.